

### Sandwiches

<b>BBQ Sandwich</b>	\$2.55
with Slaw	\$2.95
on Rye Bread	\$3.25
<b>Rib Sandwich</b>	\$4.95
<b>Turkey Sandwich</b>	\$3.25
Turkey on Rye	\$3.69

### Plates

#### BBQ Plate

BBQ, Brunswick Stew, Pickle, Bread & Sauce	\$5.95
with slaw or potato salad	\$6.35

#### Smoked Half Chicken Plate

with BBQ Beans, Slaw Roll, Pickle & Sauce	\$6.95
--	--------

#### Rib Plate

3/4 pound of Ribs BBQ Beans, Slaw, Rolls Pickle & Sauce	\$8.95
---	--------

#### Turkey Plate

with BBQ Beans, Slaw, Bread Pickle & Sauce	\$6.95
---	--------

#### Childs Plate

Chicken Tender	\$3.85
(Fries, Pickle, Small Drink)	
Corn Dog	\$3.85
(Fries, Pickle, Small Drink)	

#### Side Orders

Brunswick stew	\$2.55
BBQ Baked Beans	\$2.55
Cole Slaw	\$0.85
Potato Salad	\$0.85
Dill Pickle	\$0.85
French Fries	\$1.55
Chips 1.5 oz.	\$0.80
Chips 5.5 oz.	\$3.99

### Drinks

8 oz. Bottled Sodas	\$1.25
(Coke, Diet Coke, Dr Pepper)	

#### Fountain Drinks

Small	\$1.35
Medium	\$1.55
Large	\$1.75
(Coke, Diet Coke, Sprite, Dr Pepper.) (Root Beer, Fanta Orange, Lemonade) (Sweet Tea, Un-sweet Tea, Water)	

### Desserts

**\$1.50**

Chocolate Chip Cookies

**\$1.95 Each**

Layered chocolate cake
Layered caramel cake
Double chocolate cake
Pecan pie
Carrot cake

#### BBQ WITH SAUCE

1/2 Pound	\$4.25
1 Pound	\$8.45

#### BBQ without SAUCE

1/2 Pound	\$4.75
1 Pound	\$9.05

#### SMOKED RIBS

1/2 Pound	\$4.45
1 Pound	\$8.95
Slab	\$17.25

#### SMOKED CHICKEN HALF

\$4.25

#### SMOKED TURKEY

1/2 Pound	\$5.25
1 Pound	\$9.45

### BRUNSWICK STEW

or

#### BBQ BAKED BEANS

1/2 Pint	\$2.55
1 Pint	\$3.75
1 Quart	\$6.85
1 Gallon	\$25.50

#### BBQ SAUCE

Small Sauce	\$ .75
1/2 Pint	\$1.85
1 Pint	\$3.55
1 Quart	\$6.45
1 Gallon	\$22.50

#### COLE SLAW AND POTATO SALAD

1/2 Pint	\$1.85
1 Pint	\$3.60
1 Quart	\$6.60
1 Gallon	\$18.95

#### BUNS

Each	\$0.25
6 Pack	\$1.36
12 pack	\$2.79

#### LOAF OF BREAD

White	\$2.79
Wheat	\$3.09
Rye	\$3.09

Gallon of Tea -lemonade	\$4.50
----------------------------	--------

**FAMILY PACK #1**  
 2 Pounds Chopped Pork  
 1 Quart Brunswick Stew  
 or  
 1 Quart BBQ Baked Beans  
 1 Pint Homemade Slaw  
 or  
 1 Pint Potato Salad  
 1 Dozen Buns  
 ½ Pint of BBQ Sauce  
 2 Whole Dill Pickles  
**\$29.95**

**FAMILY PACK #2**  
 1 Slab BBQ Ribs  
 1 Quart Brunswick Stew  
 or  
 1 Quart of BBQ Baked Beans  
 1 Pint Homemade Slaw  
 or  
 1 Pint Potato Salad  
 1 Loaf of White Bread  
 ½ Pint of BBQ Sauce  
 2 Dill Pickles  
**\$31.85**

**QUANTITIES**  
 Whole Ham \$5.75 a lb.  
 Whole Shoulder \$5.50 a lb.  
 Whole Turkey (12 to 14 lbs.) \$31.95

*Smoking  
 Nothing  
 But  
 The Best  
 Since 1958*

**Frozen Whole Cakes**

CARROT

DOUBLE CHOCOLATE

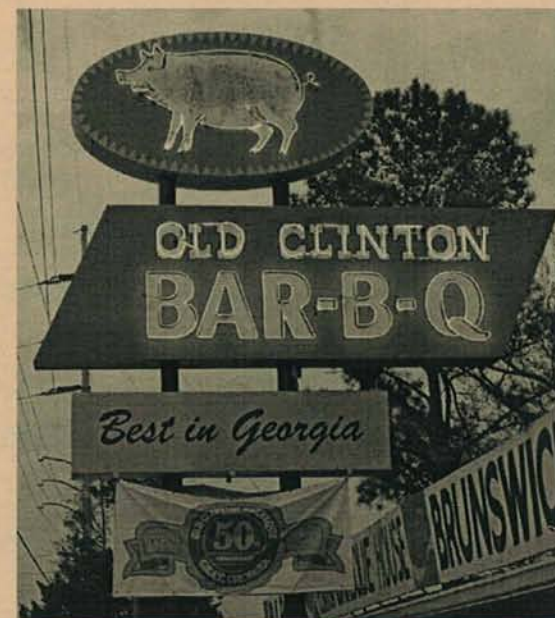
PECAN PIE

**Homemade Cakes**

12 LAYER CARAMEL

12 LAYER CHOCOLATE

**OLD CLINTON  
 BAR-B-Q  
 HOUSE**



**4214 GRAY HWY.  
 GRAY, GA. 31032**

**478-986-3225 FAX 986-0444**

**2645 N. COLUMBIA ST.  
 MILLEDGEVILLE, GA. 31061**

**478-454-0080 FAX 454-0081**